



32.00 [m] x 11.00 [m]

Multicat 3211 Navis DP1

MAIN DATA

IMO: 9611539
Callsign: PCKT
Mmsi: 246172000
Tel: +31 642354383
Iridium: NA
Email: mpr3@mprmarine.com

LOA: 32.00 [m]
Beam: 11.00 [m]
Draft: 2.70 [m]
Deck Load: 6.00 [t/m²]
Bollard pull: 34 [t]
Year of Build: 2011



CLASSIFICATION

- Bureau Veritas 1 + Hull
- Machinery Special Service
- NL Dutch flag Category A3
- Unrestricted Navigation

PROPULSION

- 2 Caterpillar C32 ACERT
- Total Horse Power 2700 [HP]
- Twin Disc Reduction Gearboxes
- Fixed Props in Forward Nozzles
- Keel Cooled
- Speed 10 Knots
- Generators 2 X Caterpillar 200 [kW]
- 360° bowthruster 280 [kW]
- 360° Sternthruster 438 [kW]

CAPACITIES

- Fuel Capacity : 153 [m³]
- Fresh Water: 47 [m³]
- Deck Area: ± 200 [m²]

ACCOMMODATION

- Heated and Airconditioned up to 11 Persons

COMMUNICATIONS

- V-Sat
- Iridium
- 2 DSC VHF Radios
- Inmarsat c terminal
- Voip Phone
- GSM Phone

NAV EQUIPMENT

- Magnetic Compass
- GPS Compass
- Daylight Viewing Radars
- Speed Log
- Echo Sounder
- Electronic Chart
- Plotter
- Watch Keeping Alarm
- AIS
- DGPS Navigator
- NAVTEX
- Talk Back Unit



Marine Projects Rotterdam

MPR 3

32.00 [m] x 11.00 [m]

Multicat 3211 Navis DP1

DECK EQUIPMENT:

HEILA HLRM CRANE 230—4SL

- 10300 [kg] @ 16.30 [m]
- 12200 [kg] @ 14.40 [m]
- 15400 [kg] @ 12.23 [m]
- 18900 [kg] @ 10.06 [m]
- 24400 [kg] @ 7.89 [m]

Heila HLRM Crane 140

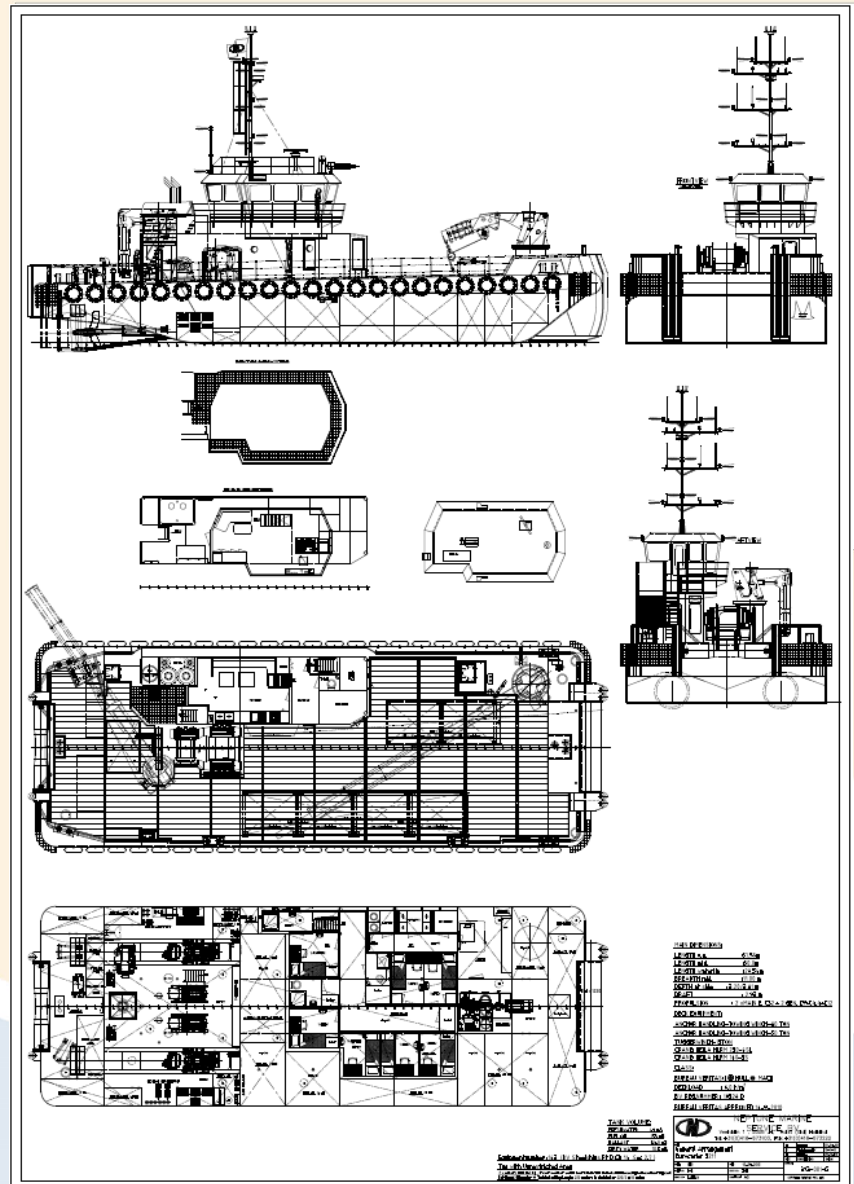
- 10000 [kg] @ 12.17 [m]
- 12500 [kg] @ 10.01 [m]
- 18000 [kg] @ 7.83 [m]
- 26000 [kg] @ 5.67 [m]

HYDRAUVISION WINCHES

- 80 [t] Anchor handling Winch
- 50 [t] Towing Winch
- 10 [t] Tugger Winch

OTHER EQUIPMENT

- Towing Hook
- Push Bow
- Bow /sternRoller
- Wheelhouse Winch Controls
- Fuel Supply Pump
- Freshwater Supply Pump
- Anchor Handling Equipment
- Forward/aft AHT Pins/ Hydraulic stopper



Marine Projects Rotterdam BV
Fortunaweg 76
3113 AN Schiedam

T + 31 10 760 0270
E info@mprmarine.com
www.mprmarine.com